



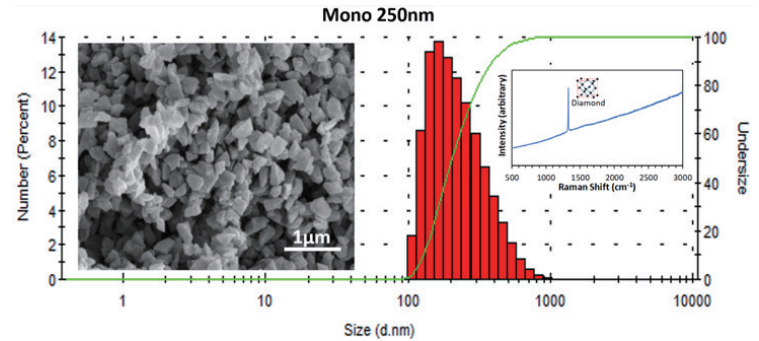
HAM/HSM Diamond Slurry

Hydroqual Advanced High-Pressure High-Temperature Monocrystalline Diamond Slurry

Hydroqual Standard High-Pressure High-Temperature Monocrystalline Diamond Slurry



HAM/HSM in different size of containers



SEM

Size distribution

INTRODUCTION:

Qual Diamond's High-Pressure High-Temperature Monocrystalline Diamond Slurry is hydro-based formulation. The slurries are made with High-Pressure High-Temperature Monocrystalline Diamond particles dispersed in the water-based liquids. The water-soluble slurry does not dry up when exposed to air and is a perfect alternative product to oil-based polishing fluids. The unique surface modification technology prevents the agglomeration of diamond particles. The product is ideal for polishing of super hard materials, such as, tungsten carbide, sapphire, ruby, etc. The available sizes range from 0.2µm to 60µm.

FEATURES:

- ◆ Monocrystalline diamond provides a cost effective means for good stock removal and finish
- ◆ It has slightly irregular shape with multiple cutting edges
- ◆ Sharp particles with higher toughness ensuring clean and efficient cutting
- ◆ It is recommended for general applications where polycrystalline features are not required
- ◆ Widely used for lapping and polishing applications
- ◆ High-purity (99-99.5%) and carefully selected diamonds effectively improve efficiency and output
- ◆ Tightly controlled particle size distribution and oversized particles
- ◆ Well stabilized slurry increases process stability
- ◆ All the ingredients are environmentally-friendly decreasing the disposal cost
- ◆ Easy to clean after lapping/polishing
- ◆ Qual Diamond's innovative formulation can sustain -20°C to 50°C environment

Size	Grit Distribution			PH value
	D10,µm	D50,µm	D99,µm	
0-0.2	0.1	0.16	0.28	7.5-9.0
0-0.25	0.1	0.15	0.4	7.5-9.0
0-0.5	0.15	0.2	0.45	7.5-9.0
0.5-1	0.25	0.42	1.35	7.5-9.0
1-2	0.71	1.11	2.06	7.5-9.0
1-3	1.2	1.7	3.2	7.5-9.0
2-3	1.5	1.95	3	7.5-9.0
3-5	2.5	3.2	5.1	7.5-9.0
5-7	3.9	5.3	9.1	7.5-9.0
4-6	3.1	5.2	7.3	7.5-9.0
6-12	5.2	8.4	13.8	7.5-9.0
7-10	5.2	7.1	12.4	7.5-9.0
10-20	8.5	16.2	22.5	7.5-9.0
20-30	17.2	24	42	7.5-9.0
30-40	23.2	31.1	51.3	7.5-9.0
40-50	28.4	47.5	61.7	7.5-9.0
Available Concentration:	1g/l, 2g/l, 5g/l, 10g/l, 25g/l, 50g/l			
Available Viscosity:	A 100-150cpm, B 200-300cpm, C 500-800cpm, D over1000cpm			
Available Package:	250ml 500m 1L 1G			